



Manufacturer	Pro Racing Design Co Ltd
Make	PRD
Model	GALAXY
Validity of the homologation	6 years
Number of pages	27

This Homologation Form reproduces descriptions, illustrations and dimensions of the engine at the time that Karting Australia conducted the homologation. The height of the complete engine on all photographs must be as a minimum 7 cm.

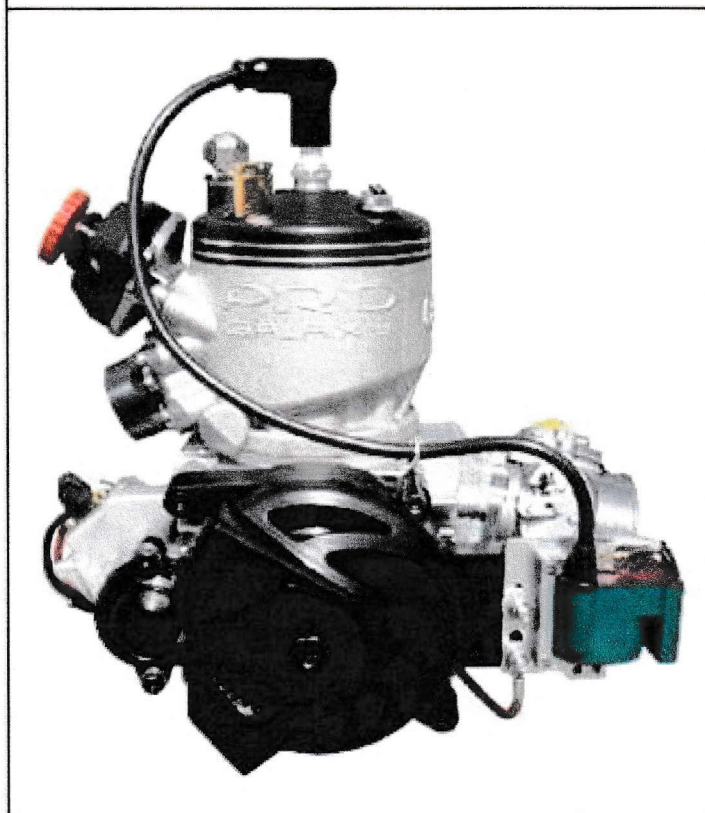


PHOTO OF DRIVE SIDE OF ENGINE

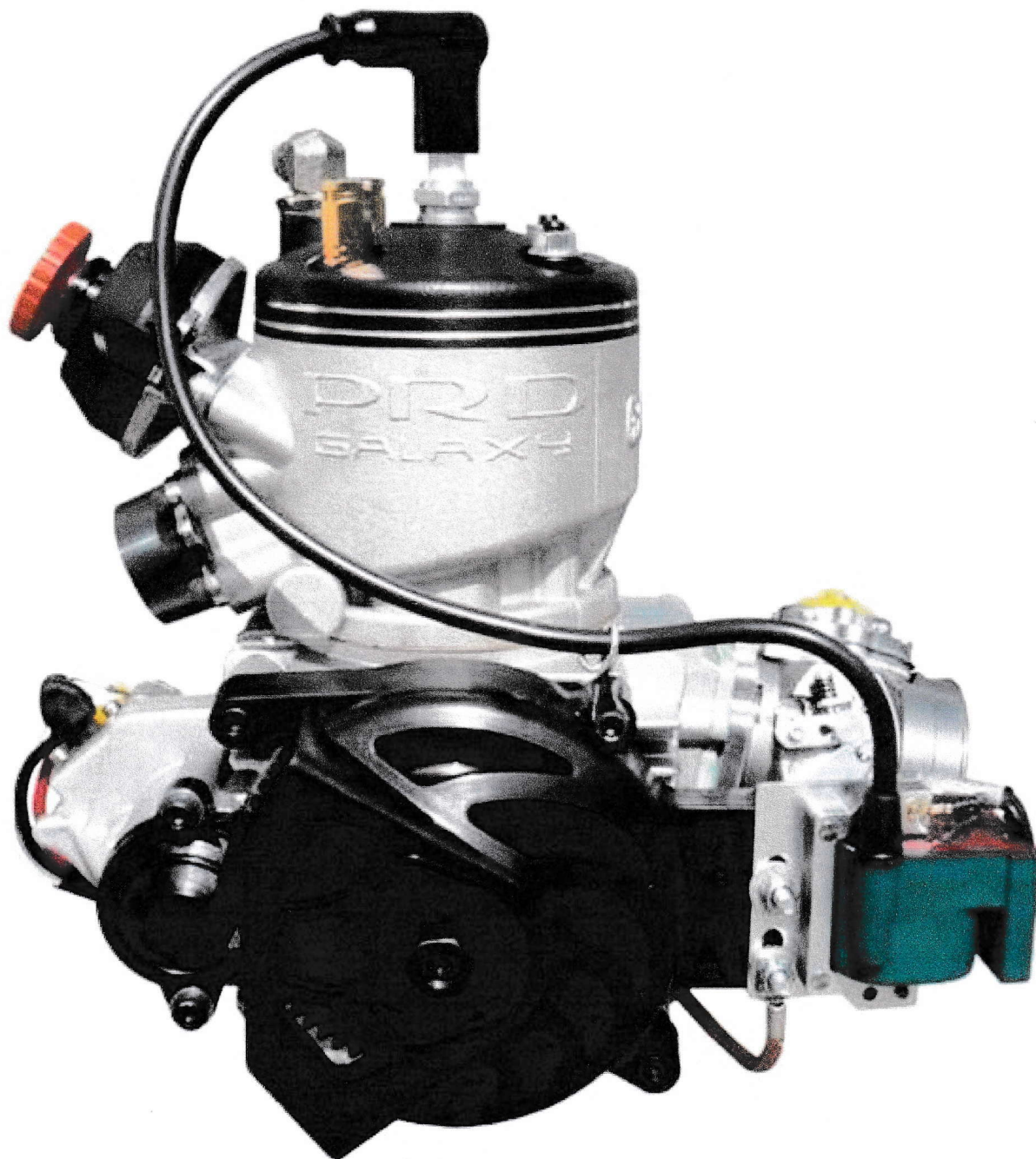


PHOTO OF OPPOSITE SIDE OF ENGINE

Signature and stamp of AIDKA

SKAA Homologation No. B.5

PHOTO OF DRIVE SIDE OF THE COMPLETE ENGINE



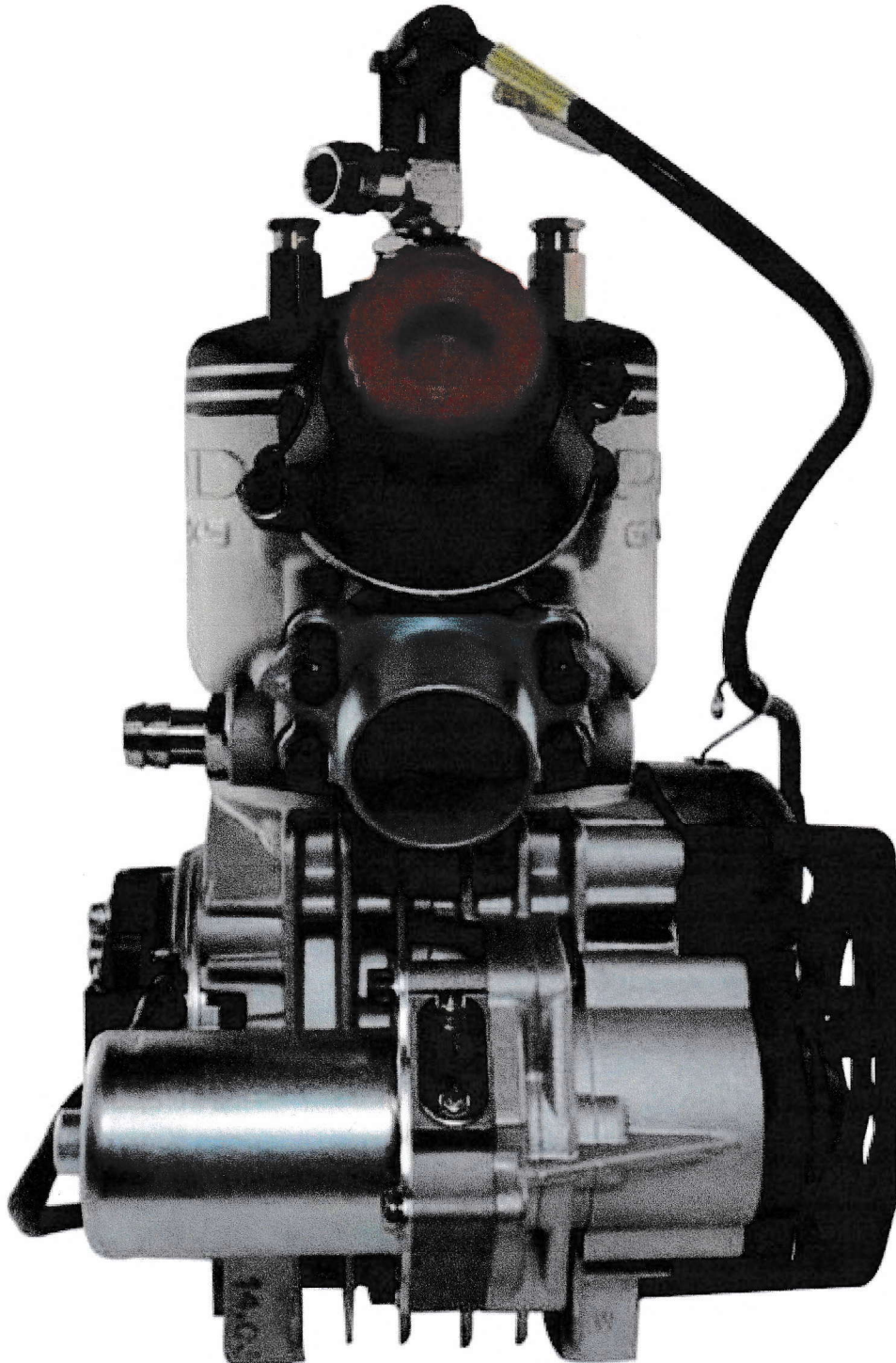
SKAA Homologation No. B.5

PHOTO OF OPPOSITE DRIVE SIDE OF THE COMPLETE ENGINE



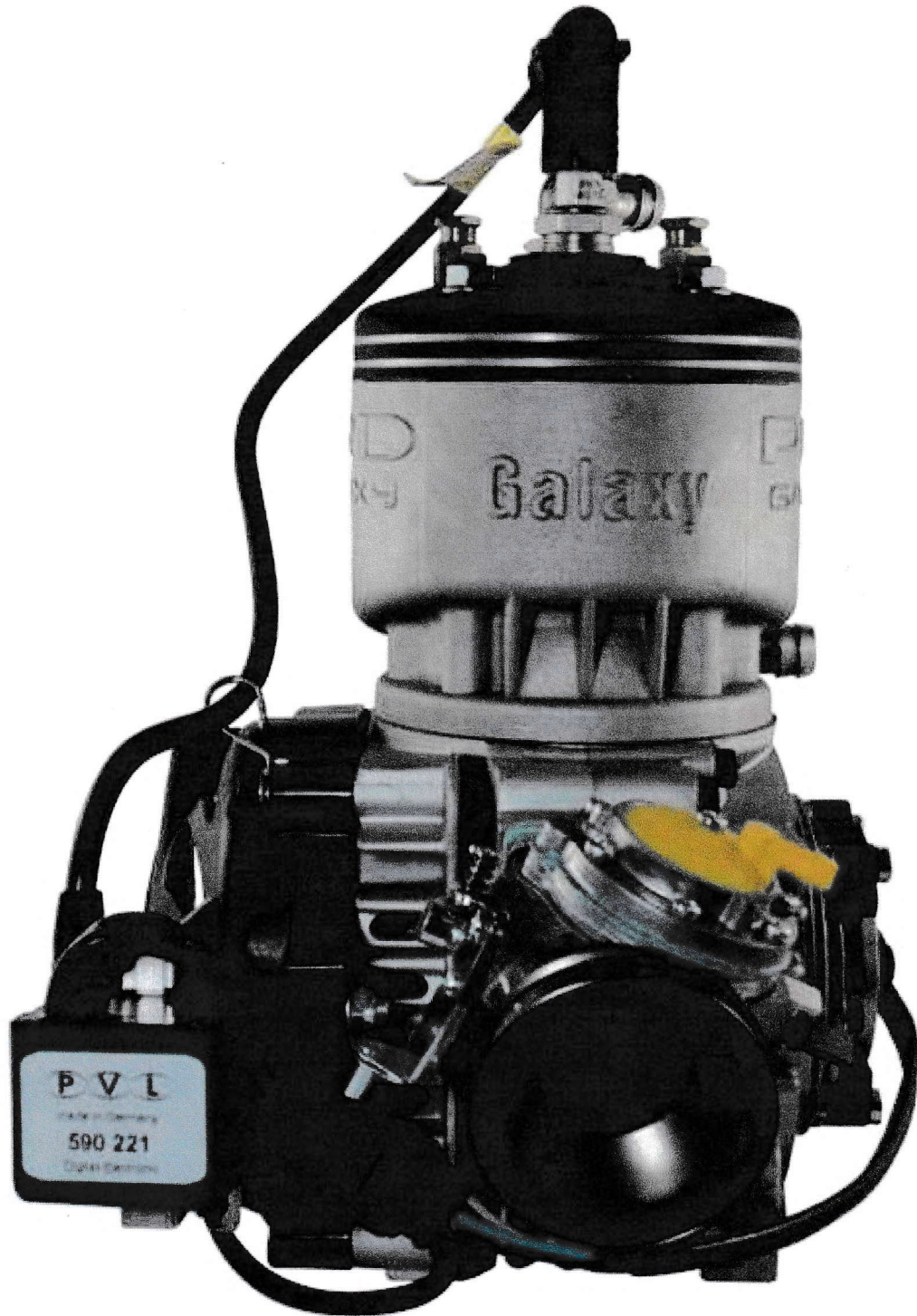
SKAA Homologation No. B.5

PHOTO OF THE REAR OF THE COMPLETE ENGINE



SKAA Homologation No. B.5

PHOTO OF THE FRONT OF THE COMPLETE ENGINE



SKAA Homologation No. B.5

PHOTO OF THE COMPLETE ENGINE TAKEN FROM ABOVE



SKAA Homologation No. B.5

PHOTO OF THE COMPLETE ENGINE TAKEN FROM BELOW



SKAA Homologation No. B.5



TECHNICAL INFORMATION

A	CHARACTERISTICS	
	The number of decimal places must be 2 or comply with the relevant tolerance.	Tolerances & remarks
	Cylinder	
	Volume of cylinder	<u>123.15cm³</u> <125cm ³
	Original bore	<u>53.90mm</u> --
	Theoretical maximum bore	<u>54.40mm</u> --
	Original Stroke	<u>54mm</u> --
	Number of transfer ducts, cylinder/sump	<u>3 / 3</u> --
	Number of exhaust ports / ducts	<u>3</u> --
	Volume of the combustion chamber	<u>10.5cm³</u> minimum
	Crankshaft	
	Number of bearings	<u>2</u> --
	Diameter of bearings	<u>25</u> □0.1mm
	Minimum weight of crankshaft assembly	<u>1880g</u> minimum
	All parts represented on page 17 photo	
	Exhaust Restrictor	
	Restrictor for TaG Restricted class's	<u>KA-G1 24.95mm</u> Max
	Connecting rod	
	Connecting rod centreline	<u>100mm</u> □0.2mm
	Diameter of big end	<u>18mm</u> □0.05mm
	Diameter of small end	<u>14mm</u> □0.05mm
	Min. weight of the connecting rod	<u>118g</u> minimum

SKAA Homologation No. B.5

Piston		
Number of piston rings	<u>1</u>	
Min. weight of the bare piston	<u>130g</u>	minimum
Gudgeon pin		
Diameter	<u>14mm</u>	<input type="checkbox"/> 0.05mm
Length	<u>44mm</u>	<input type="checkbox"/> 0.15mm
Minimum weight	<u>24g</u>	Minimum
Clutch		
Minimum weight	<u>1050g</u>	minimum
Of all the parts represented on the page 21 technical drawing		

B	OPENING ANGLES	
Of the inlet (main transfer ports)	<u>126°</u>	<input type="checkbox"/> 2°
Of the exhaust	<u>191°</u>	<input type="checkbox"/> 2°
Of the exhaust ears	<u>184°</u>	<input type="checkbox"/> 2°
Of the boosters	<u>127.5°</u>	<input type="checkbox"/> 2°

C	MATERIAL
Cylinder head	<u>ALLOY</u>
Cylinder	<u>ALLOY</u>
Cylinder wall	<u>CAST IRON</u>
Sump	<u>ALLOY</u>
Crankshaft	<u>IRON</u>
Connecting rod	<u>STEEL</u>
Piston	<u>ALLOY</u>

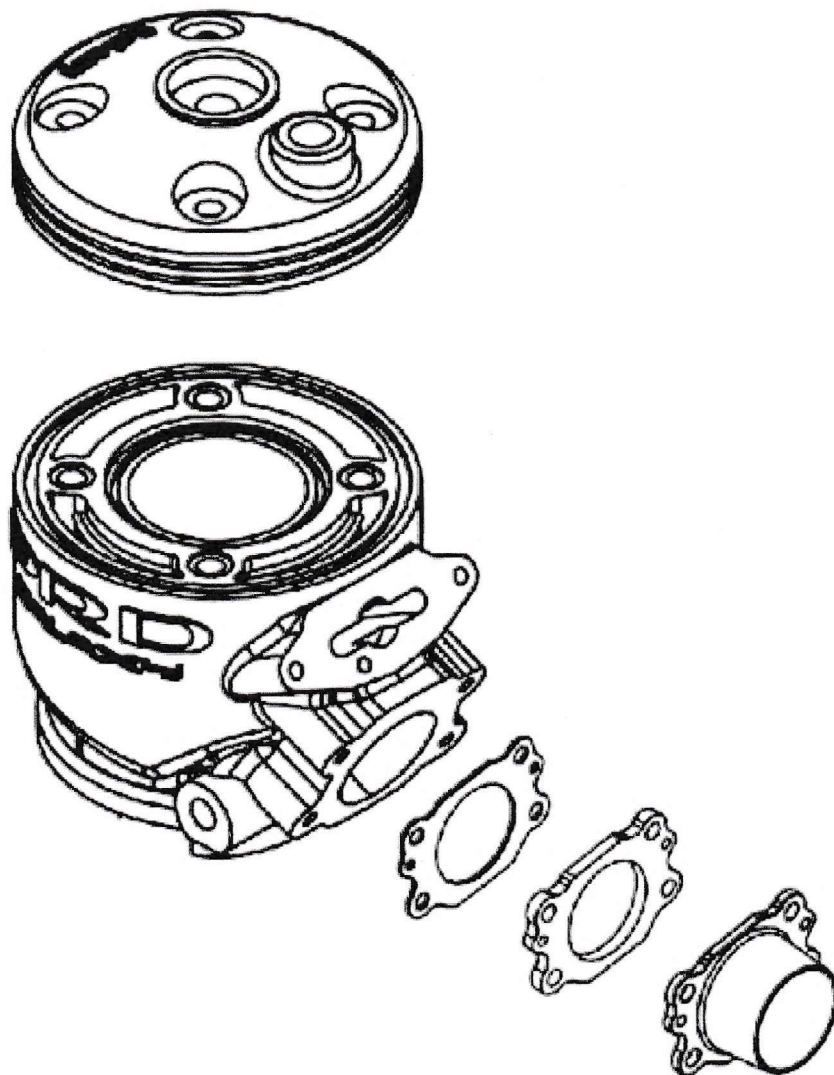
SKAA Homologation No. B.5

D

PHOTOS, DRAWINGS & GRAPHS

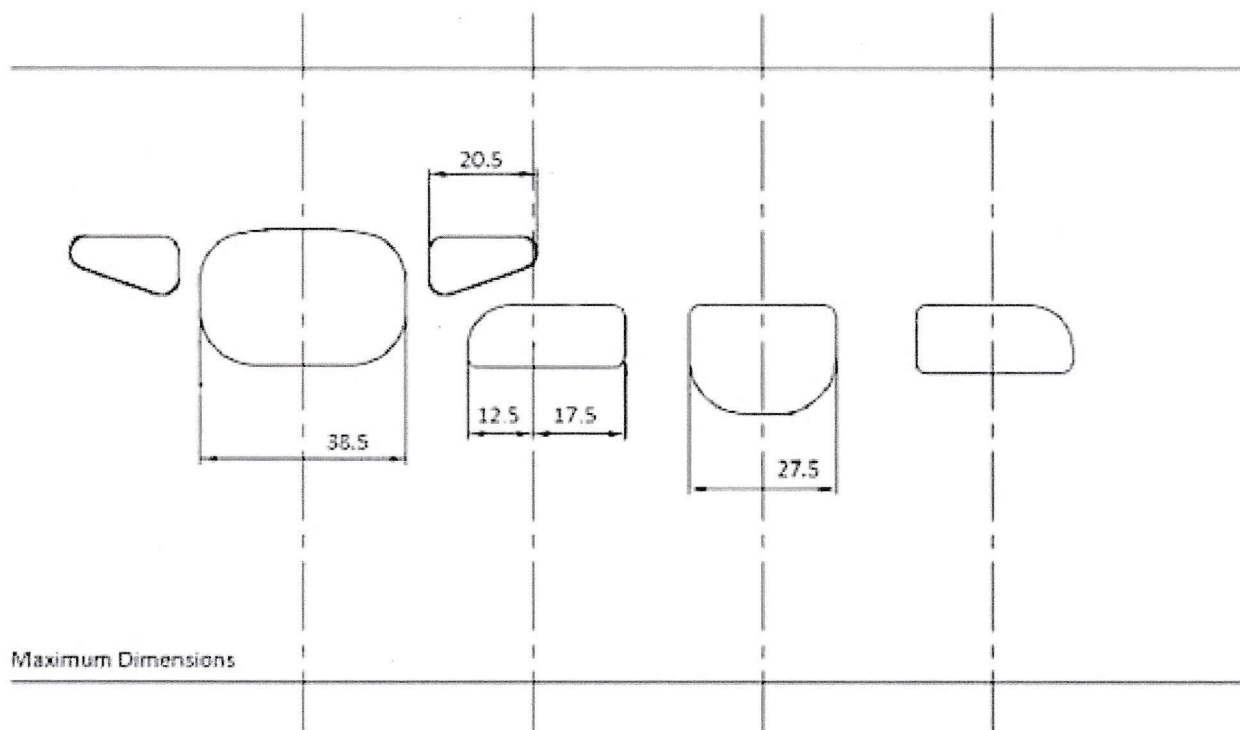
D.1 CYLINDER UNIT

EXPLODED DRAWING OF THE CYLINDER, CYLINDER HEAD AND EXHAUST MANIFOLD UNIT



.. Section D.1

DRAWING OF THE CYLINDER DEVELOPMENT



*DRAWING OF THE CYLINDER BASE
without dimensions*

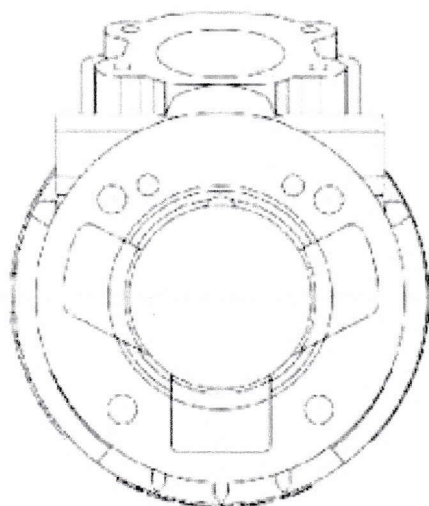


PHOTO OF THE CYLINDER BASE



SKAA Homologation No. B.5

... Section D.1

DRAWING OF THE CYLINDER HEAD AND OF THE COMBUSTION CHAMBER without dimensions

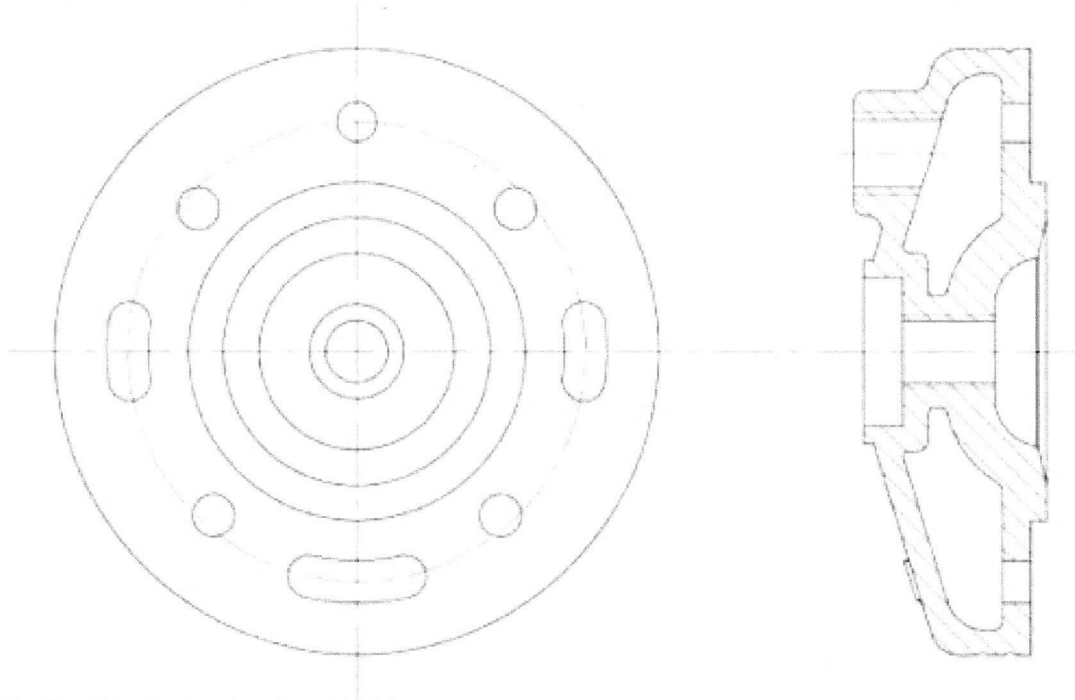
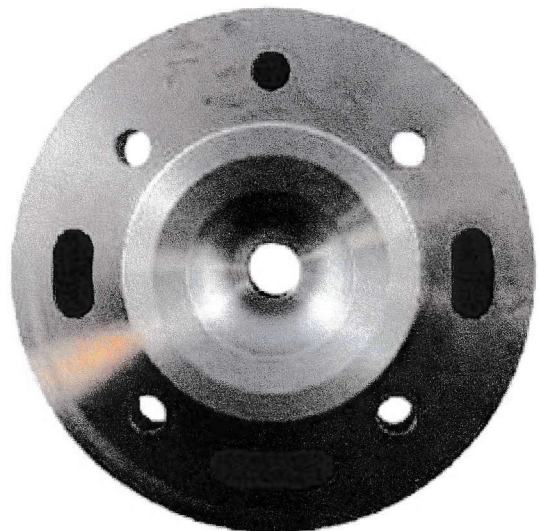


PHOTO OF THE CYLINDER HEAD

*PHOTO OF THE COMBUSTION CHAMBER IN
THE CYLINDER HEAD*



SKAA Homologation No. B.5

... Section D.1

VERTICAL CROSS SECTION VIEW OF CYLINDER WITH LINER, without dimensions

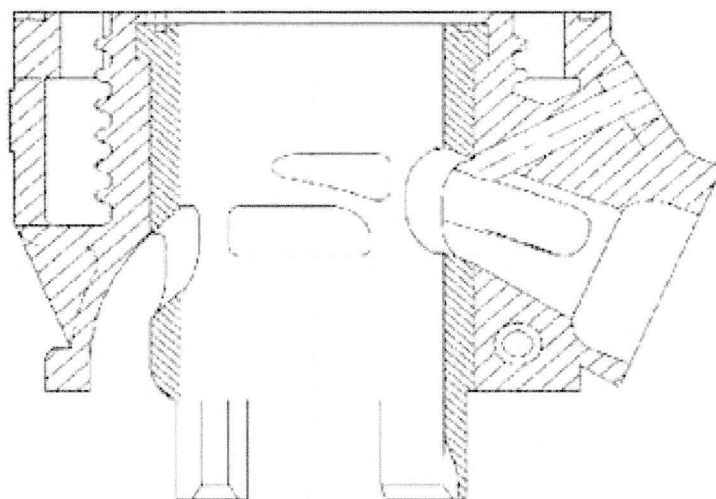


PHOTO OF THE CYLINDER FROM ABOVE

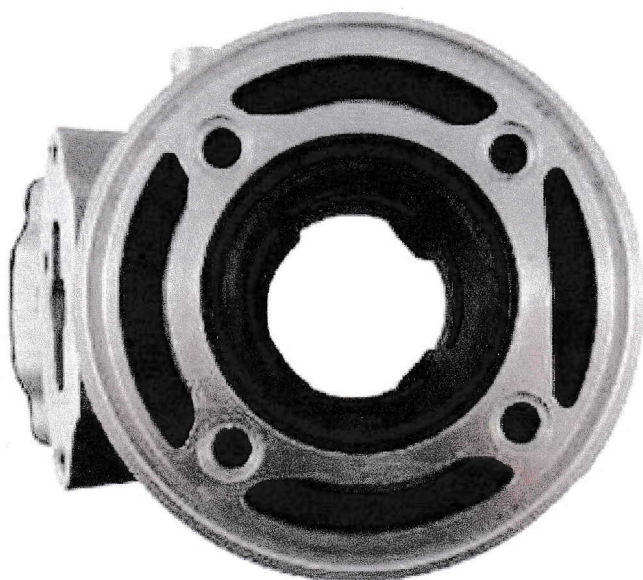
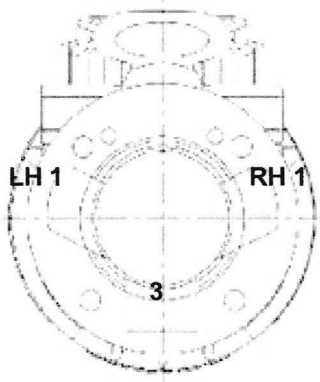


PHOTO OF THE CYLINDER FROM RH SIDE



... Section D.1

TRANSFER DUCTS VOLUME

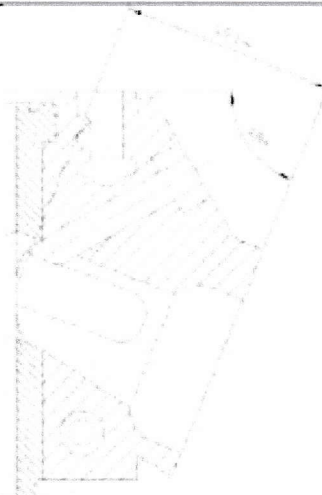
	Transfer position on 3-transfer cylinder	TRANSFER No.	VOLUME in cm^3
		Transfer No. 1 LH	18.50 +/- 5 %
		Transfer No. 2 LH	18.50 +/- 5 %
		Transfer No. 3 or 5	12.80 +/- 8 %

EXHAUST DUCT LENGTH

	ANGLE \square in $^\circ$	Minimum in mm
	68° +/-1°	49.64 mm +/-1.00

The L min. dimension will be the result of the value taken on the reference engine minus 5 mm.

Technical Drawing No.13

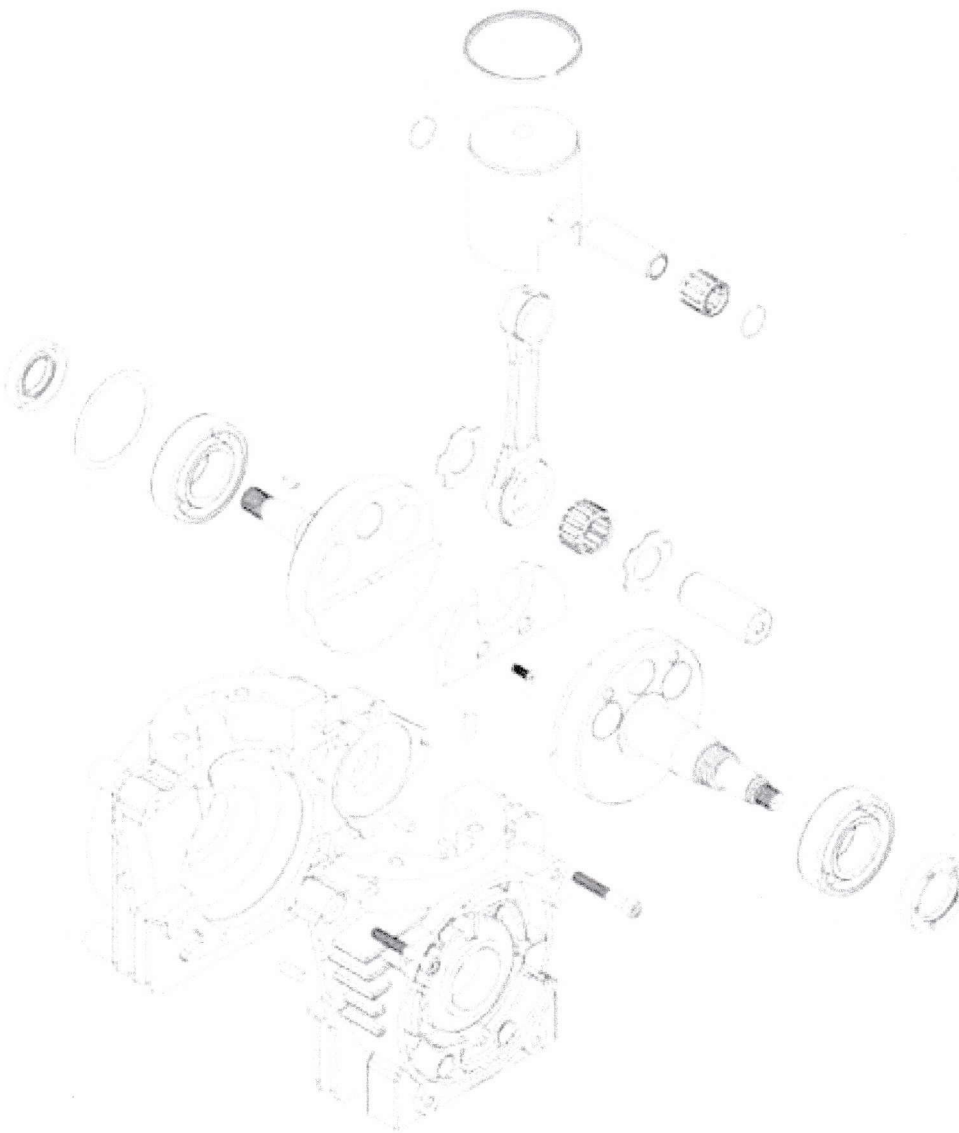


- ☐ A: Centring guide centred in relation to the exhaust duct by the exhaust manifold fixation screws, with a total thickness of 20 +/- 0.05 mm and being drilled in its centre by a hole with a 5 mm diameter, H7 bore.
- ☐ B: Control gauge composed of a shaft with a 5g6 diameter having a 2.5 mm radius at its end and a length = L min + 20+10.

SKAA Homologation No. B.5

D.2 CONROD, CRANKCASE, CRANKSHAFT & PISTON

*EXPLODED DRAWING OF THE PISTON, CRANKSHAFT, CONNECTING ROD AND
CRANKCASES UNIT (exploded crankshaft)*



...Section D.2

PHOTO OF THE CRANKSHAFT & CONROD

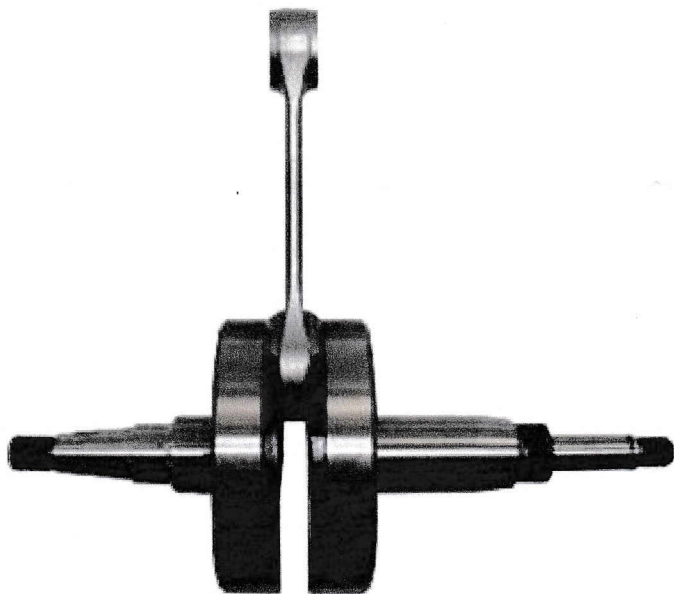
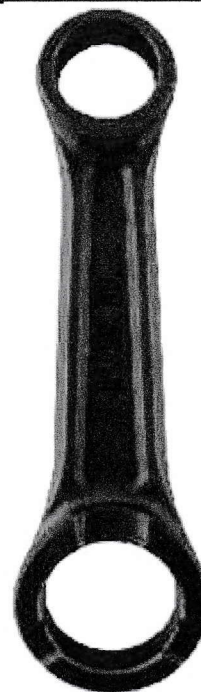
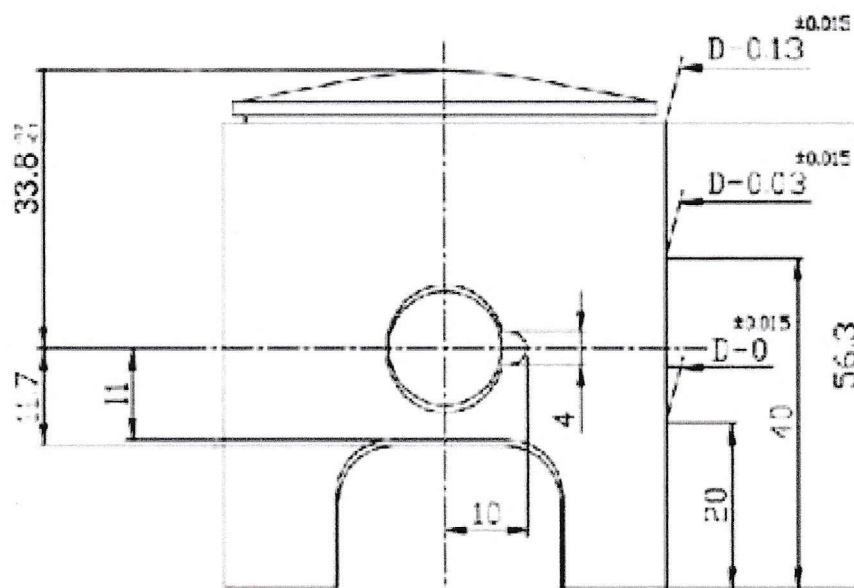


PHOTO OF THE CONROD



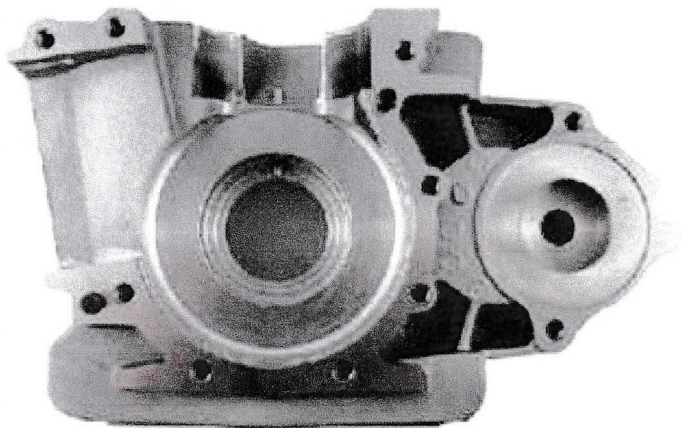
DRAWING OF THE PISTON (MAIN DIMENSIONS incl. tolerances)



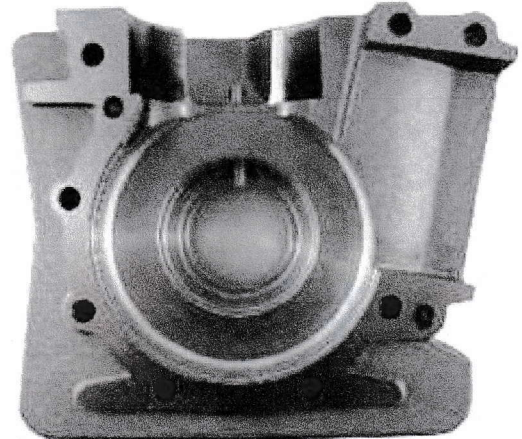
SKAA Homologation No. B.5

...Section D.2

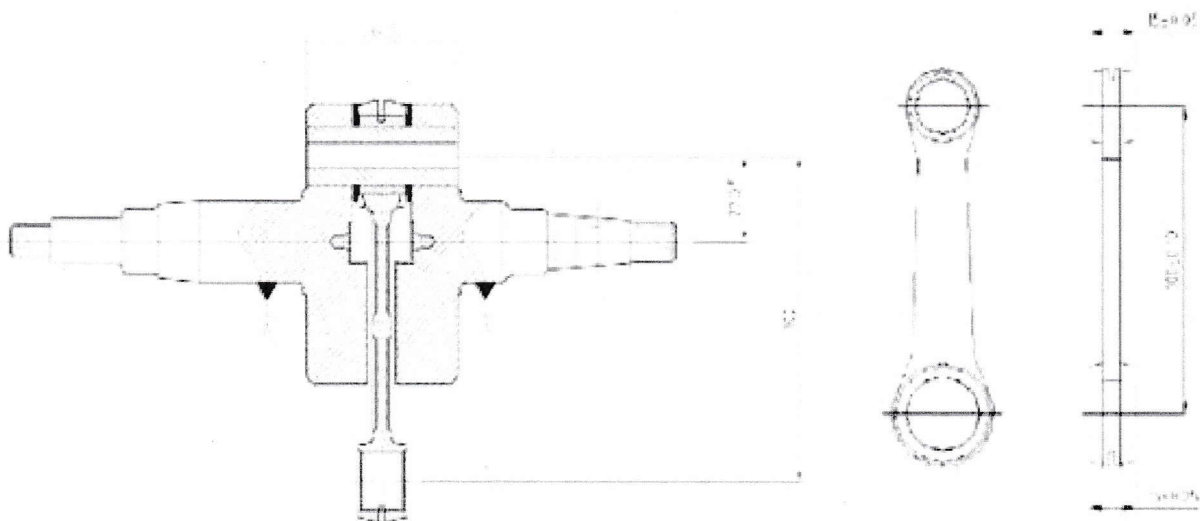
*PHOTO OF THE INSIDE OF THE RH
CRANKCASE*



*PHOTO OF THE INSIDE OF THE LH
CRANKCASE*



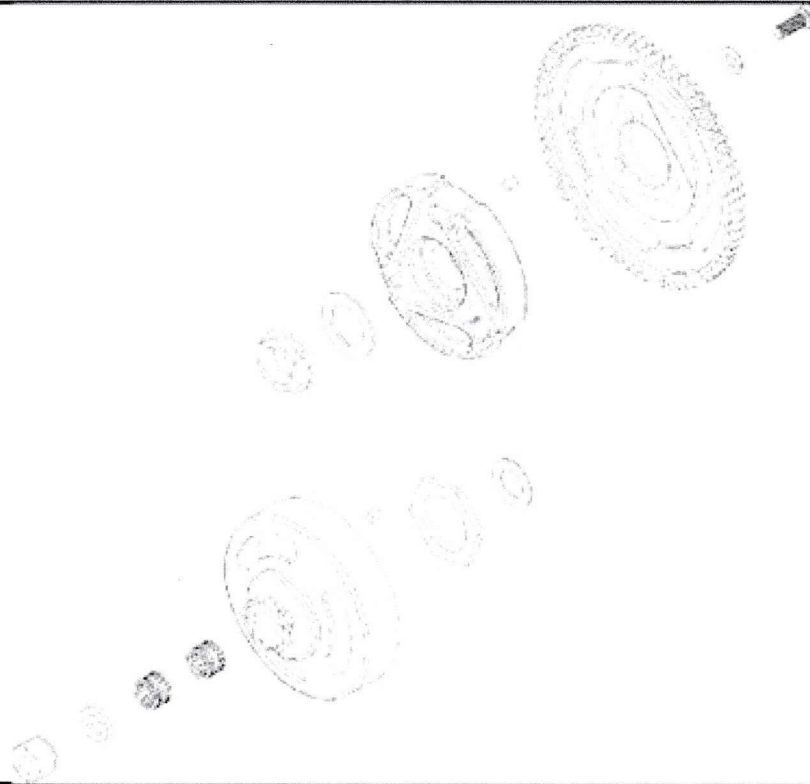
*DRAWING OF THE CRANKSHAFT - CON ROD UNIT (DIMENSIONS incl. tolerances, big & small
ends thickness, crank mass thickness & diameter)*



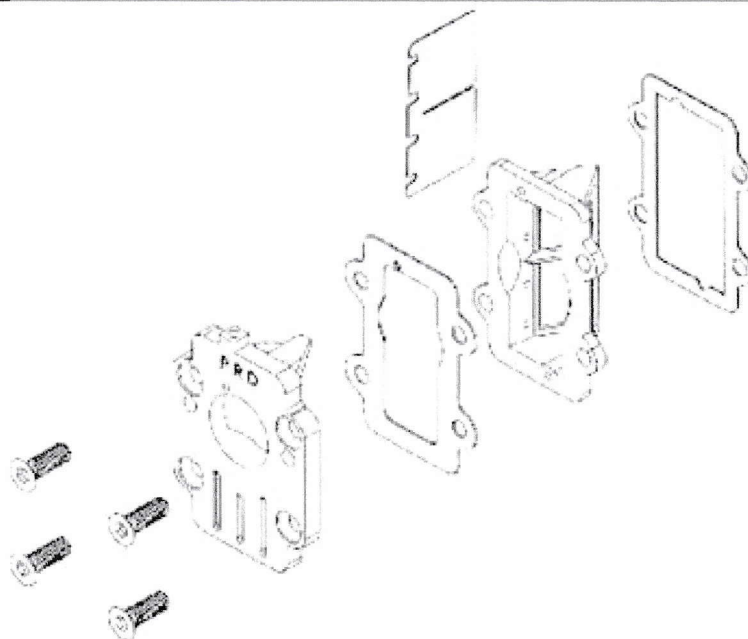
SKAA Homologation No. B.5

D.4 REED VALVE & CLUTCH

TECHNICAL DRAWING (exploded view) OF THE CLUTCH ASSEMBLY

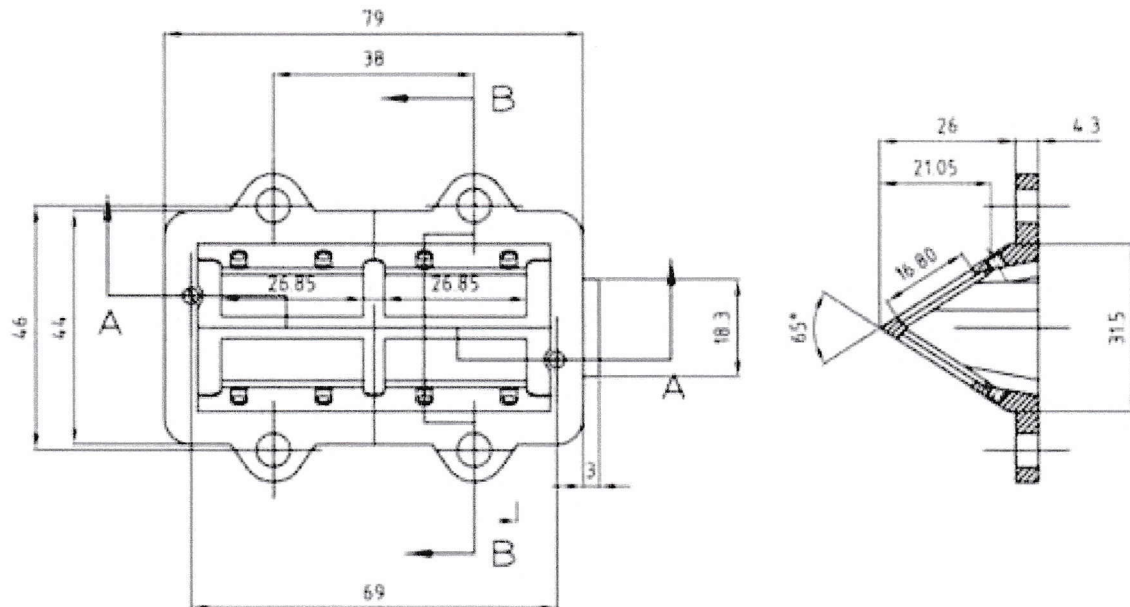


TECHNICAL DRAWING (exploded view) OF THE REED VALVE

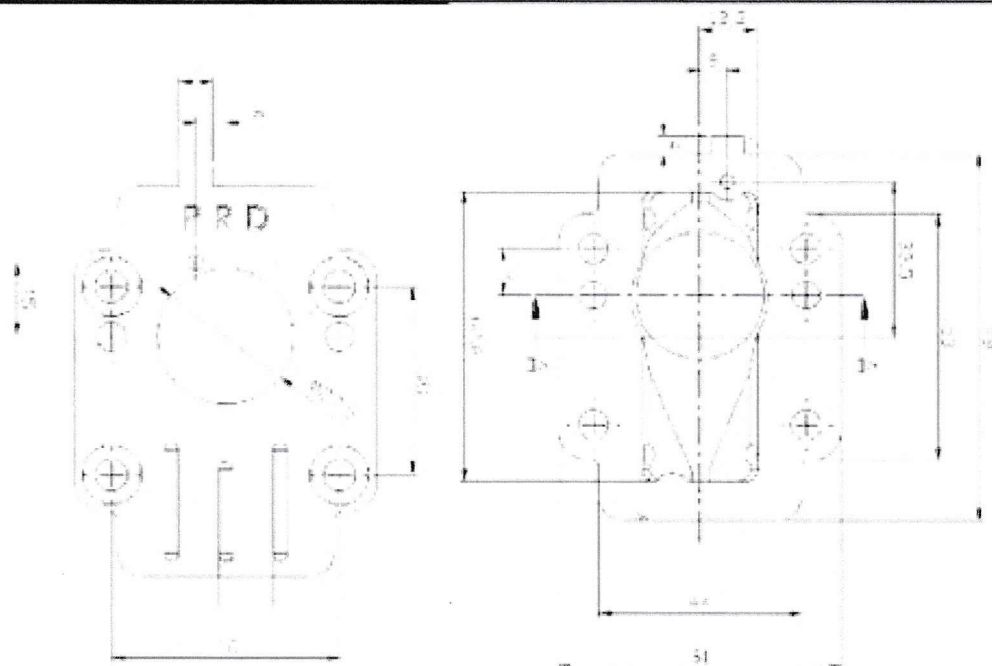


... Section D.4

*DRAWING OF THE REED VALVE
(DIMENSIONS incl. tolerances)*



*DRAWING OF THE REED VALVE COVER
(only basic engine)*



D.5 EXHAUST SYSTEM

PHOTO OF THE EXHAUST MANIFOLD

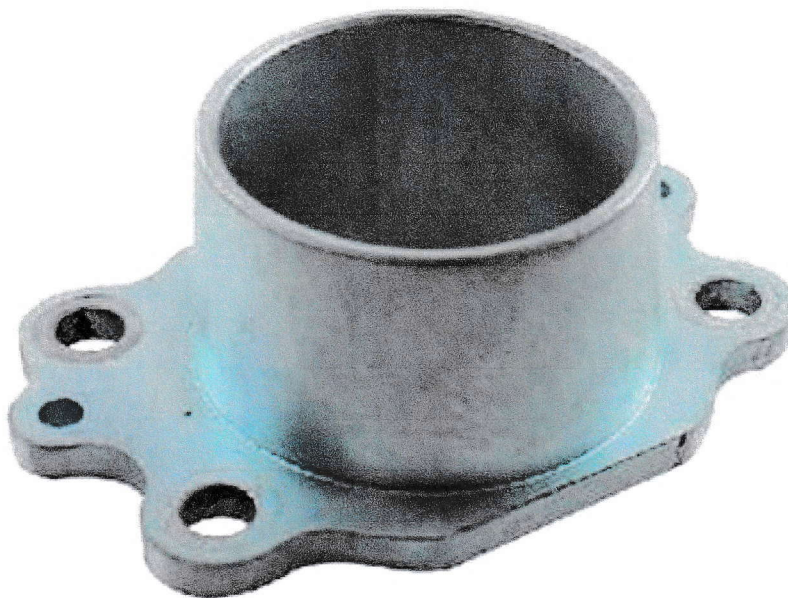


PHOTO OF THE EXHAUST



SKAA Homologation No. B.5

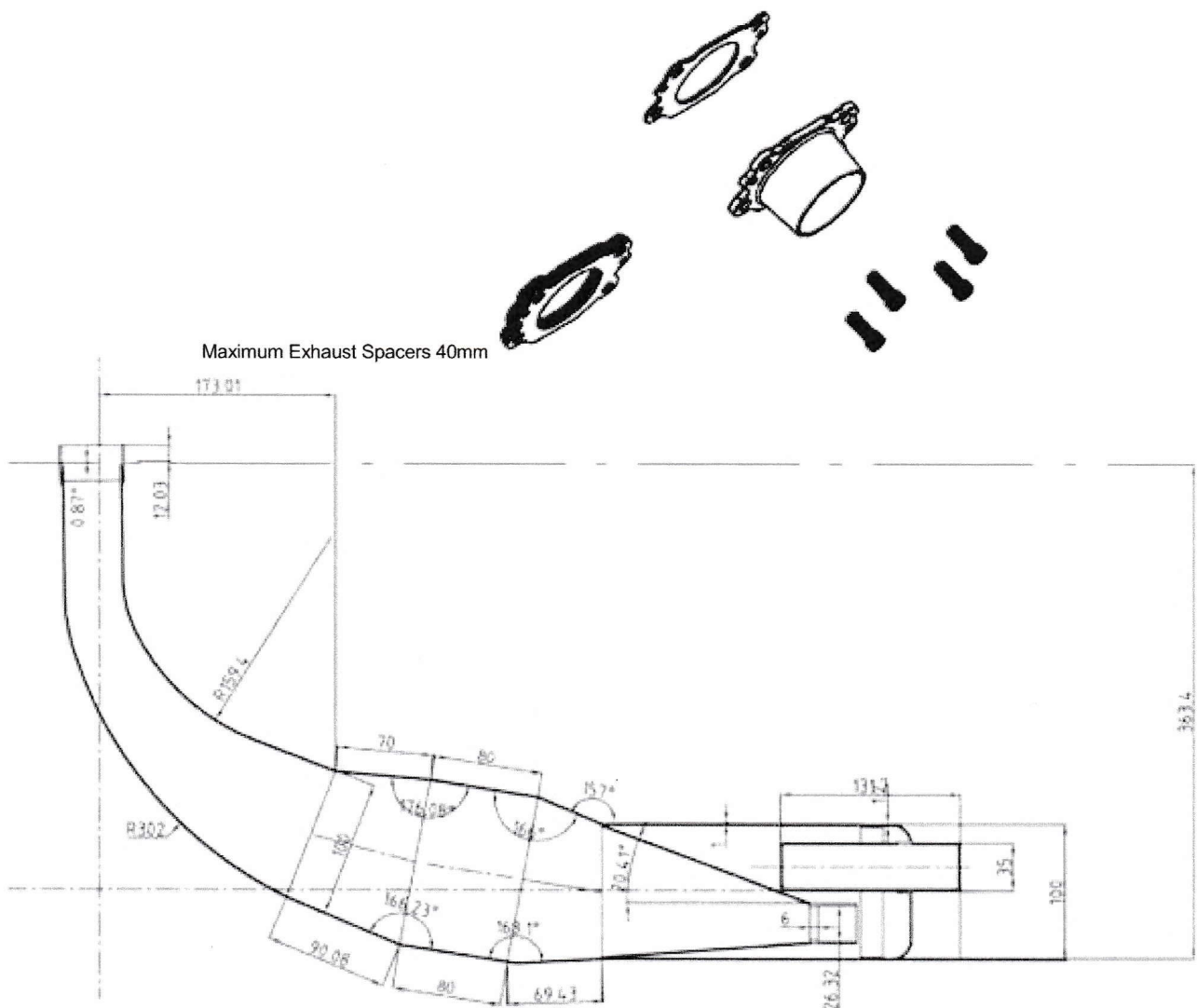
... Section D.5

**TECHNICAL DESCRIPTIONS
OF THE EXHAUST (Art. 8.9.3 of HR)**

Weight in g	2280	Minimum
Volume in cc	4150	+/-5 %

TECHNICAL DRAWING

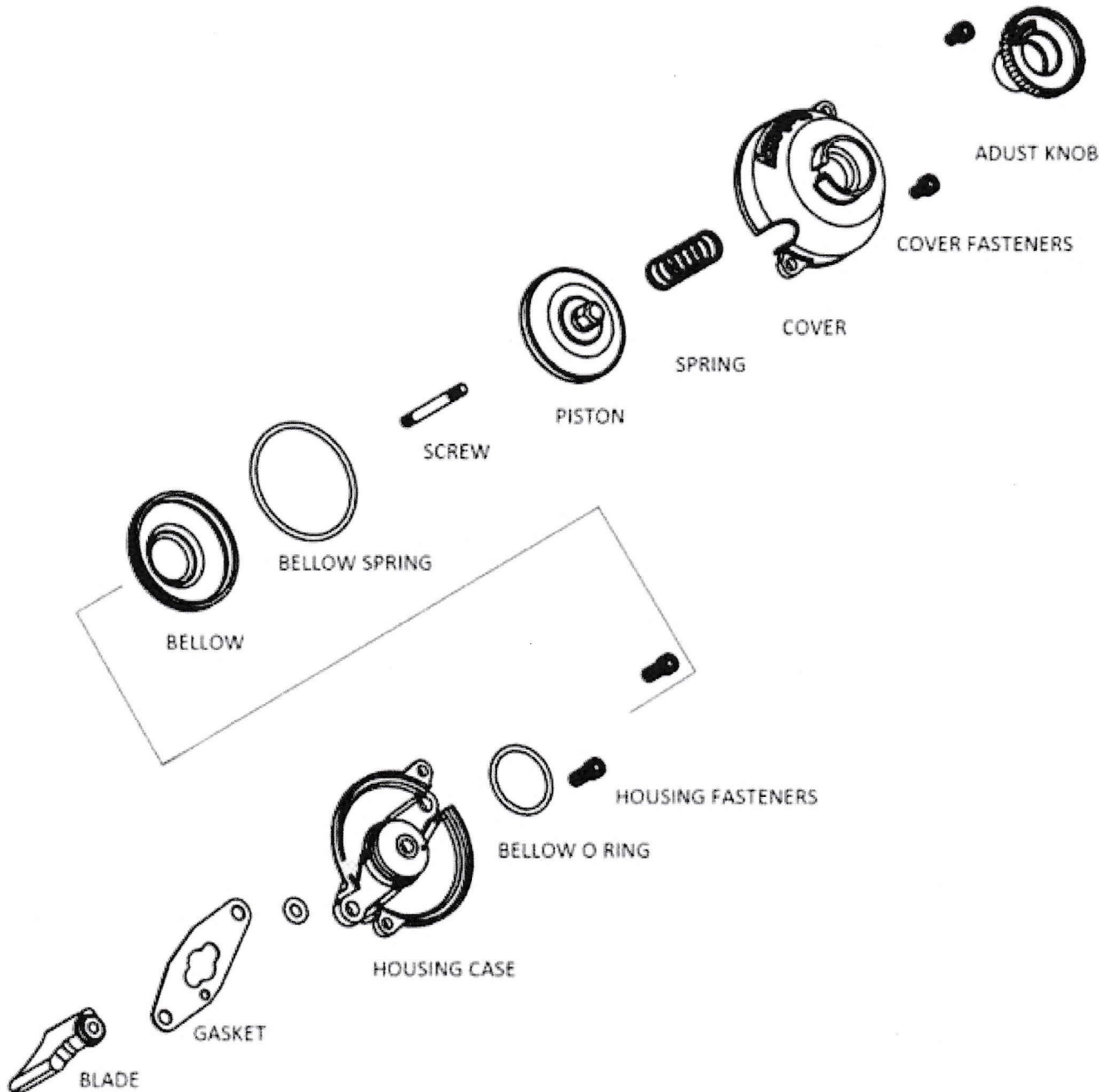
It must include all the information necessary to build this exhaust.



SKAA Homologation No. B.5

... Section D.5

EXPLODED DRAWING AND DESIGNATION OF THE POWER VALVE COMPONENTS

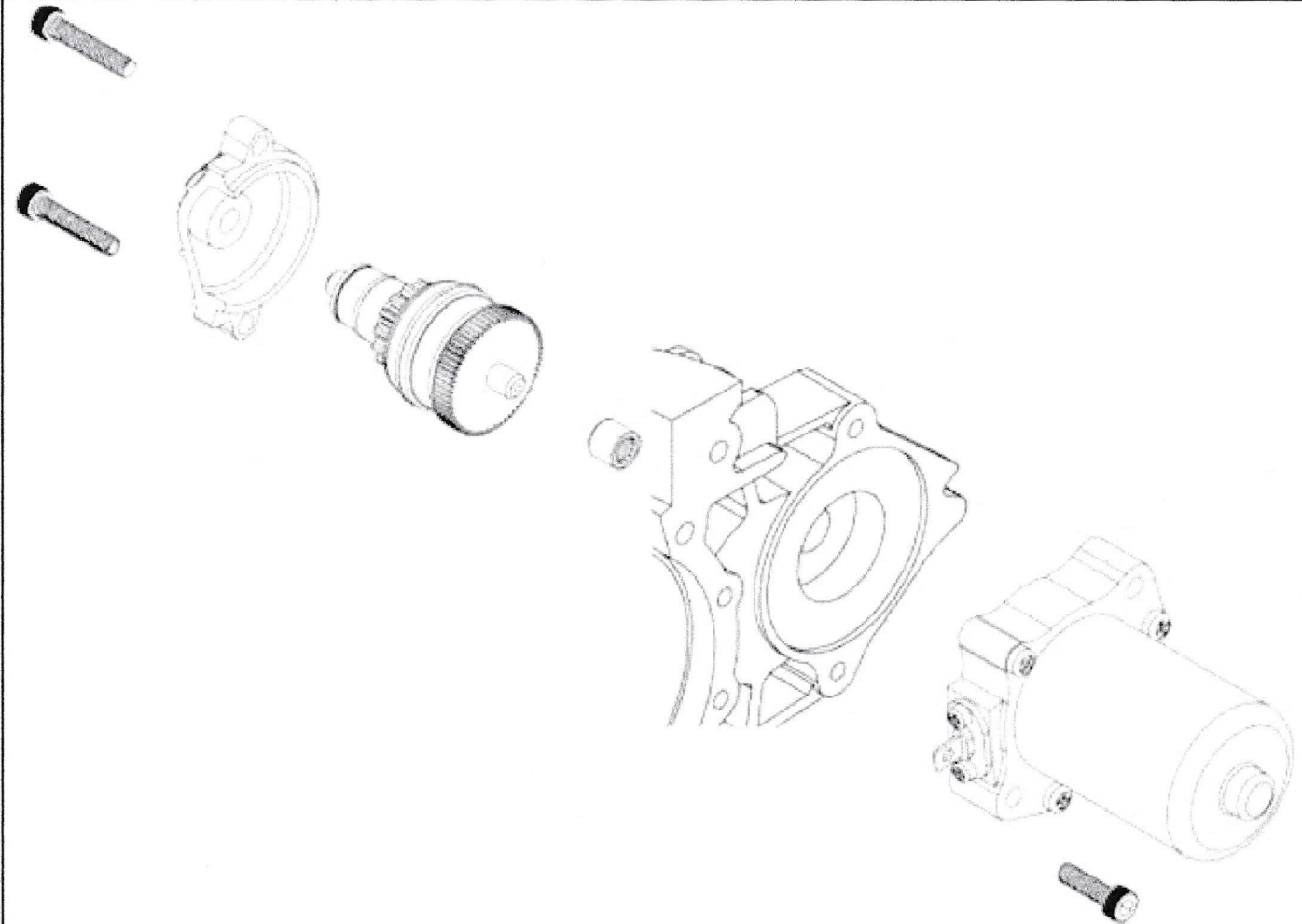


The aim of the exploded drawings is to identify the principles, the functioning and the whole mechanical unit

SKAA Homologation No. B.5

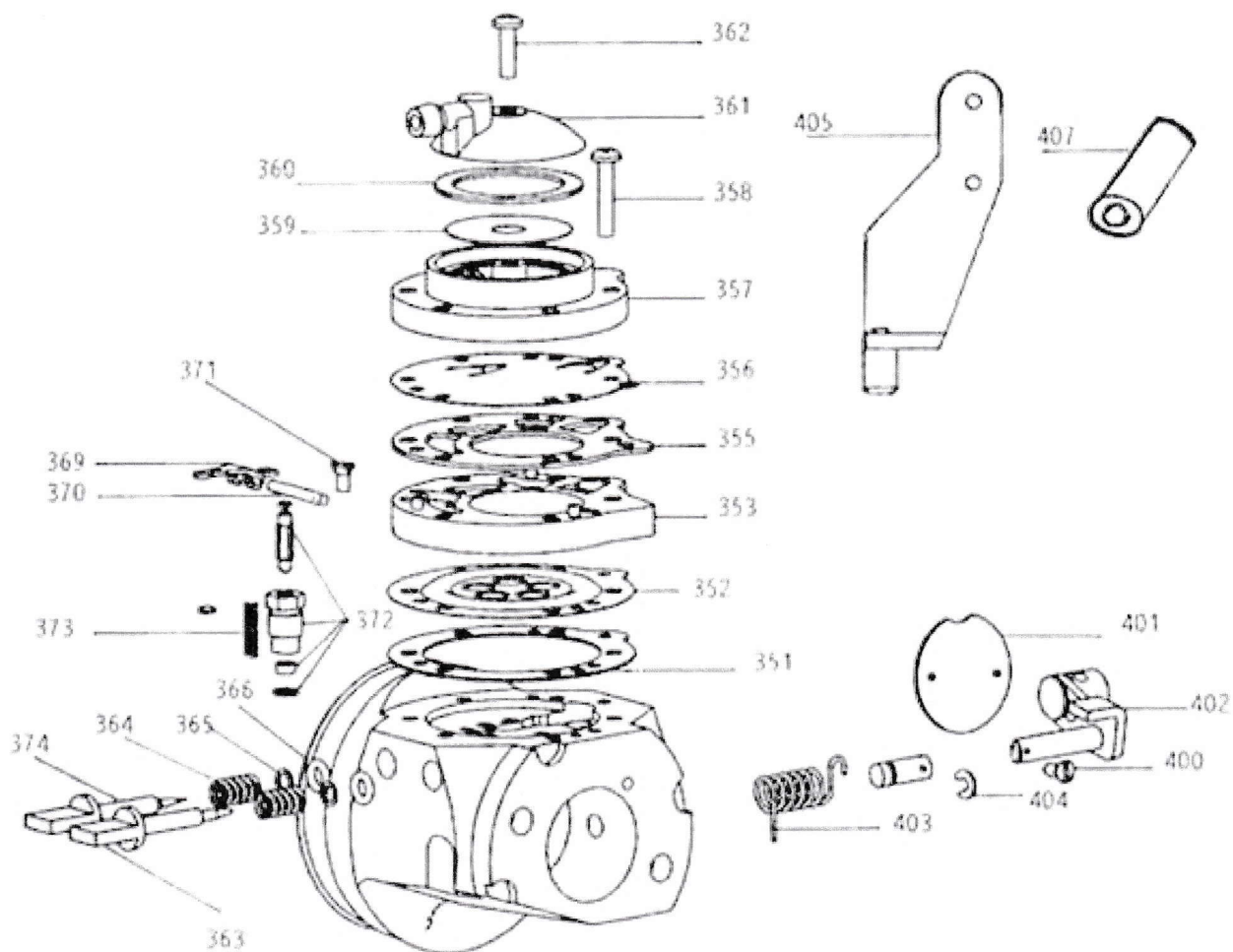
D.6 STARTER

EXPLODED DRAWING OF THE STARTING UNIT AND OF ITS HOUSING



D.7 CARBURETTOR

EXPLODED DRAWING OF THE CARBURETTOR



SKAA Homologation No. B.5

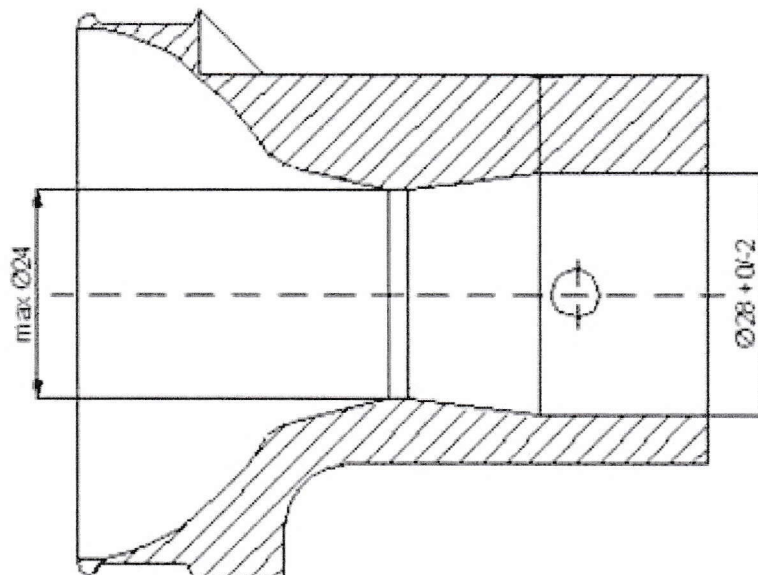
... Section D.7

PHOTO OF THE CARBURETTOR
(include markings)



Must be marked PRD L9

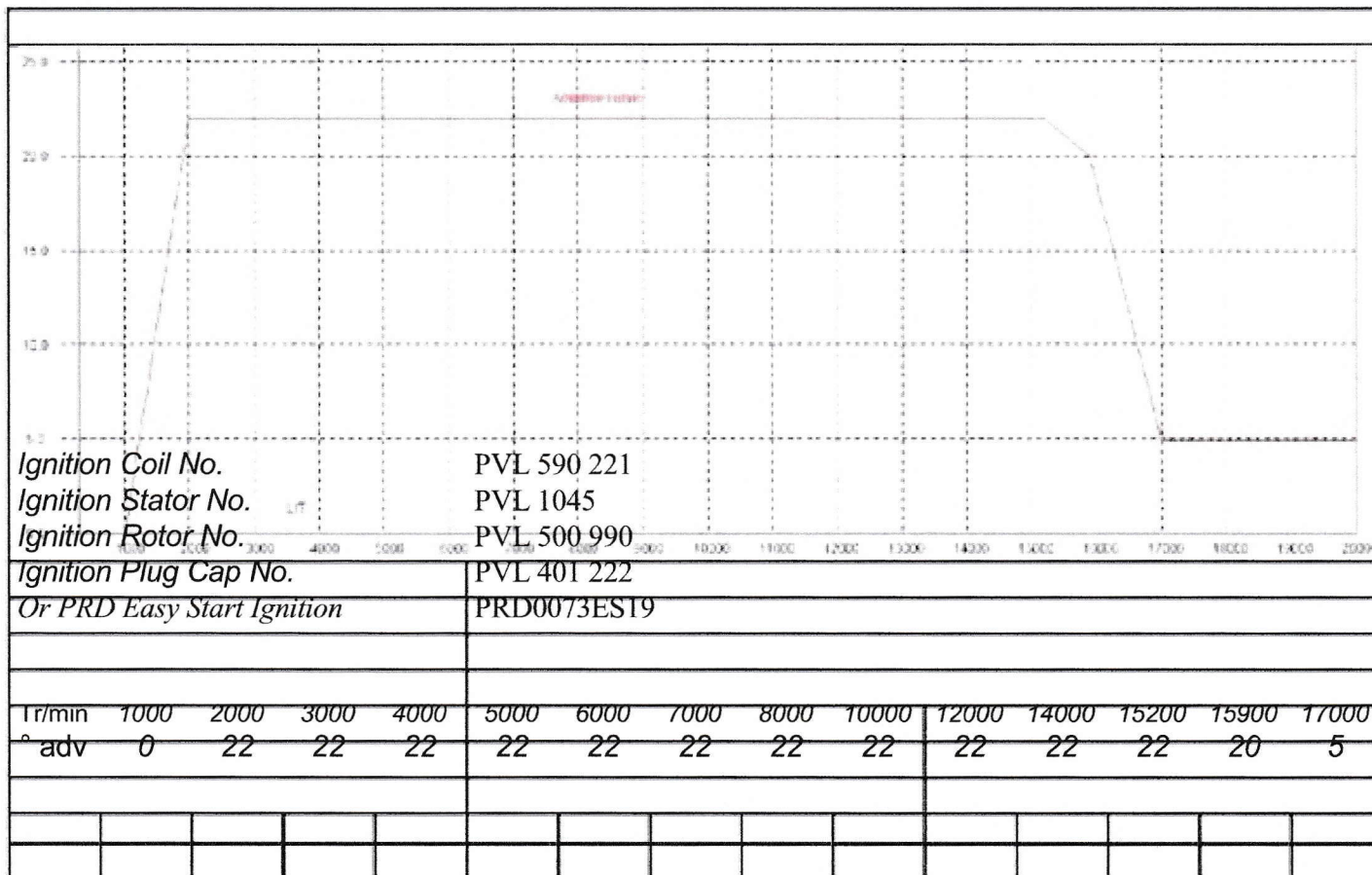
DRAWING OF THE CROSS SECTION OF THE CARBURETTOR
(include passage dimension)



D.8 ELECTRICAL SYSTEM

IGNITION SYSTEM

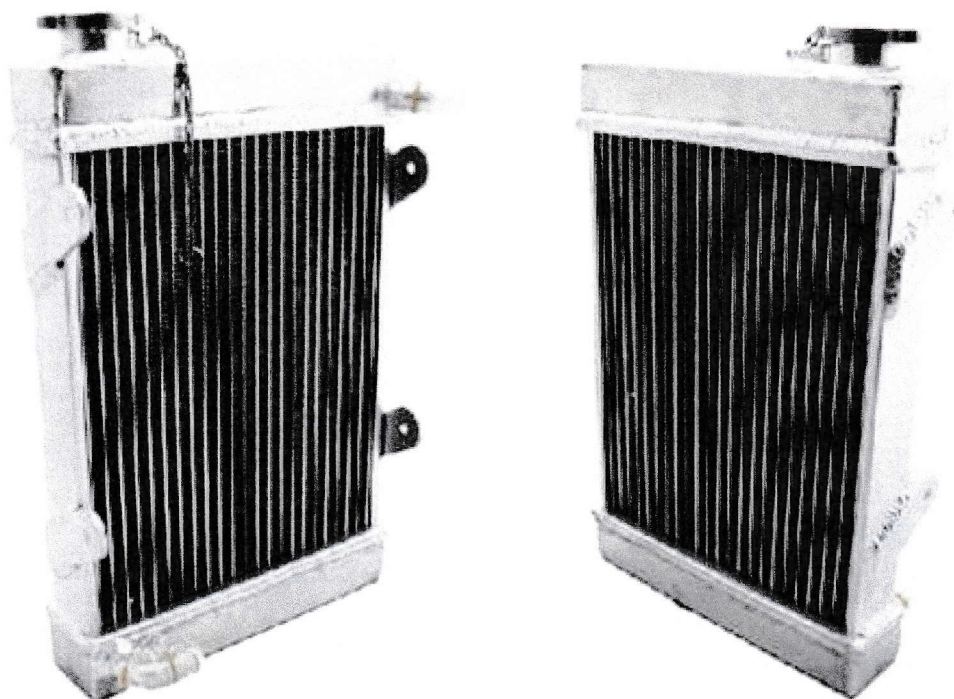
ADVANCE CURVE GRAPHS



SKAA Homologation No. B.5

... Section D.9

PHOTO OF THE RADIATOR



DRAWING OF THE RADIATOR
(include dimension)

